



REGIONAL SPECIALISED METEOROLOGICAL CENTRE -TROPICAL CYCLONES, NEW DELHI
TROPICAL WEATHER OUTLOOK

DEMS-RSMC TROPICAL CYCLONES NEW DELHI DATED 01.08.2025

TROPICAL WEATHER OUTLOOK FOR THE NORTH INDIAN OCEAN (THE BAY OF BENGAL AND THE ARABIAN SEA) VALID FOR THE NEXT 168 HOURS ISSUED AT 0600 UTC OF 01.08.2025 BASED ON 0300 UTC OF 01.08.2025.

LAND:

Yesterday's upper air cyclonic circulation over northern Gangetic West Bengal & adjoining Bangladesh lay over Sub-Himalayan West Bengal & Sikkim & neighbourhood and extend upto 9.4 km above mean sea level tilting southwestwards with height at 0300 UTC of today, the 01st August, 2025.

BAY OF BENGAL:

Scattered to broken low and medium clouds with embedded intense to very intense convection lay over south Bay of Bengal south of latitude 10.0 °N south Andaman Sea and moderate to intense convection lay over northeast Bay of Bengal. Scattered low and medium clouds with embedded isolated weak to moderate convection lay over rest Bay of Bengal.

***PROBABILITY OF CYCLOGENESIS (FORMATION OF DEPRESSION) DURING NEXT 168 HRS:**

| 24 HOURS | 24-48 HOURS | 48-72 HOURS | 72-96 HOURS | 96-120 HOURS | 120-144 HOURS | 144-168 HOURS |
|----------|-------------|-------------|-------------|--------------|---------------|---------------|
| NIL | NIL | NIL | NIL | NIL | NIL | NIL |

***NOTE: EVERY 24HR FORECAST IS VALID UPTO 0300 UTC (0830 IST) OF NEXT DAY**

ARABIAN SEA:

Scattered low and medium clouds with embedded isolated moderate to intense convection lay over southeast Arabian Sea, Lakshadweep Islands, Maldives and Comorin area. Scattered low and medium clouds with embedded isolated weak to moderate convection lay over southwest & central Arabian Sea.

***PROBABILITY OF CYCLOGENESIS (FORMATION OF DEPRESSION) DURING NEXT 168 HRS:**

| 24 HOURS | 24-48 HOURS | 48-72 HOURS | 72-96 HOURS | 96-120 HOURS | 120-144 HOURS | 144-168 HOURS |
|----------|-------------|-------------|-------------|--------------|---------------|---------------|
| NIL | NIL | NIL | NIL | NIL | NIL | NIL |

***NOTE: EVERY 24HR FORECAST IS VALID UPTO 0300 UTC (0830 IST) OF NEXT DAY**

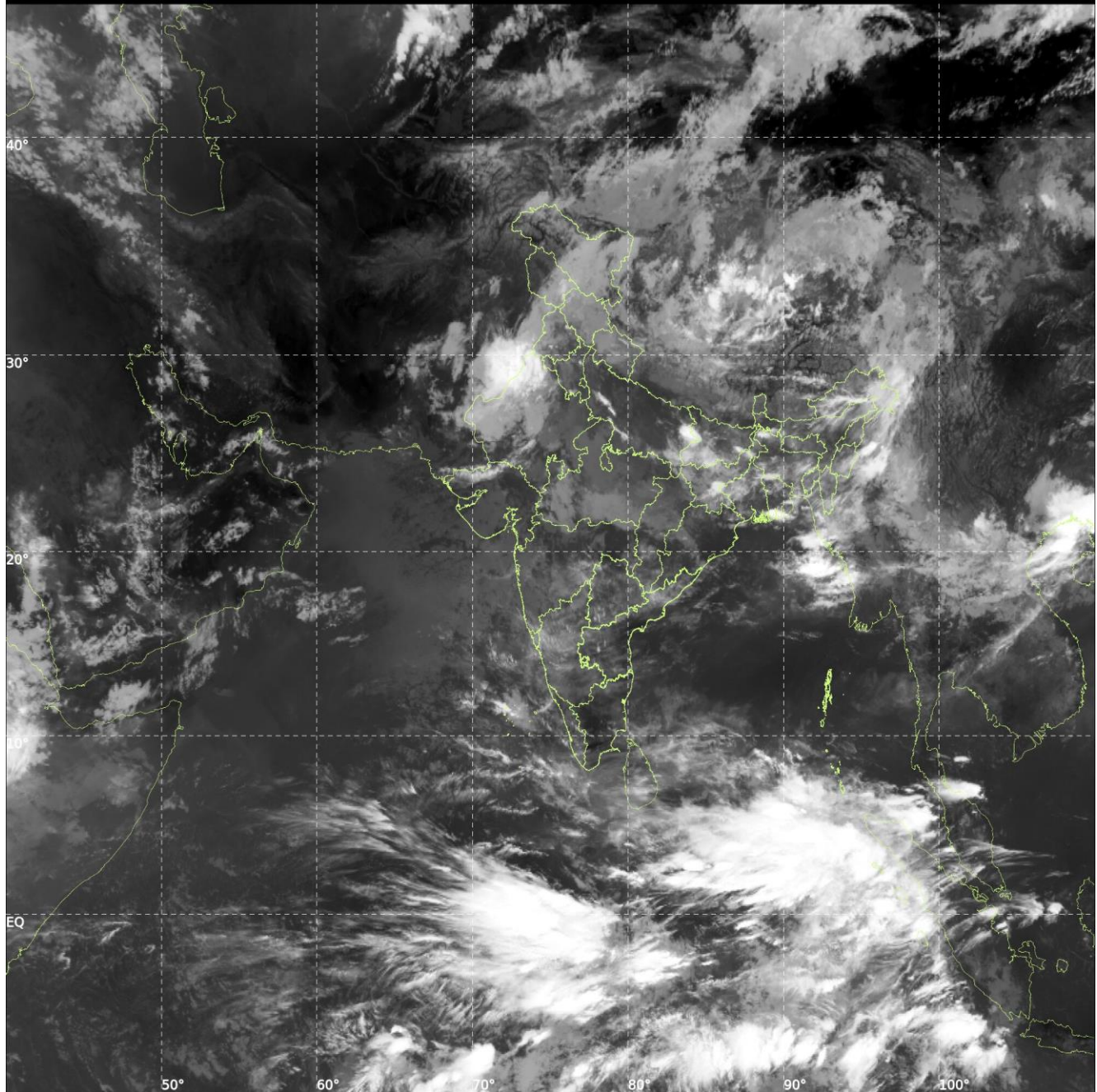
REMARKS: NIL



INSAT-3DS IMG, Thermal Infrared1 Count @ 10.83 μm
GMT:01-08-2025/(0300-0327) IST:01-08-2025/(0830-0857)
L1C MERCATOR (LINEAR STRETCH: 1%)

430

908



Cloud distribution: (a) Isolated: <25%, Scattered:25-50%, Broken: 51-75%, Solid:>75%, Convection Intensity: (a) Weak: Cloud Top Temperature(CTT)>-25°C,(b)Moderate:CTT:-25°Cto-40°C,(c)Intense:CTT: -41°Cto -70°Cand(d)Very Intense::Less than -70°C
PROBABILITYOFCYCLOGENESIS(FORMATIONOFDEPRESSION):NIL:0%,LOW:1-33%,MODERATE:34-66%ANDHIGH:67-100%
ThisisaguidanceBulletinforWMO/ESCAPPanelMembercountries.VisitrespectiveNationalwebsitesforCountryspecificBulletins